



FluidCleaner Mobil FCM 60/100

Description

The FluidCleaner Mobil FCM is a mobile oil service unit and is used for offline filtration when filling systems and when transferring hydraulic and lubricating fluids.

With the FCM, HYDAC is providing a flexible and reliable service unit for conditioning oil, which significantly increases the life expectancy of operating media, components and therefore of entire systems, resulting in reduced operating costs.

Applications

- Hydraulic and lubrication systems in different industries (for example, machine tools, plastic injection moulding machines, paper mills, construction machinery, steel industry, marine & offshore, mobile industry)

Advantages

- Prevents costly component damage and system failures
- Reliable and convenient operation
- Increased oil service life
- Reduction in Life Cycle Cost LCC

Technical specifications

	Vane pump version	Gear pump version
Max. flow rate	FCM 60 = 60 l/min FCM 100 = 100 l/min	
Operating pressure	$p_{\max} = 6 \text{ bar}$	$p_{\max} = 10 \text{ bar}$
Viscosity range	15 ... 400 mm ² /s	15 ... 1000 mm ² /s
Permitted operating fluid	Mineral oil (DIN 51424)	
Fluid temperature	-10 ... 80 °C	
Ambient temperature	-10 ... 40 °C	
Seals, gaskets	NBR (Option: FPM)	
Protection class	IP 55	
Power cable, length	10 m	
Connections/Length of hoses		
Suction hose	NW 38 (1 1/2") / 2.5 m	
Pressure hose	NW 25 (M 36x2) / 4 m	
Weight	135 kg (FCM 60)	145 kg (FCM 100)

Model code

FCM **100** **L** **N** **3B03** **C/** **S5D5-V**

Filtration unit _____
FluidCleaner Mobil

Flow rate _____
060 = 60 l/min
100 = 100 l/min

Versions _____
L = vane pump without change-over (standard)
F = vane pump with change-over
K = gear pump without change-over
G = gear pump with change-over

Connection voltage _____
M* = 230 V / 50 Hz (1 Ph + PE)
N = 400 V / 50 Hz (3 Ph + N + PE)
S = 500 V / 50 Hz (3 Ph + PE)
X = other voltage

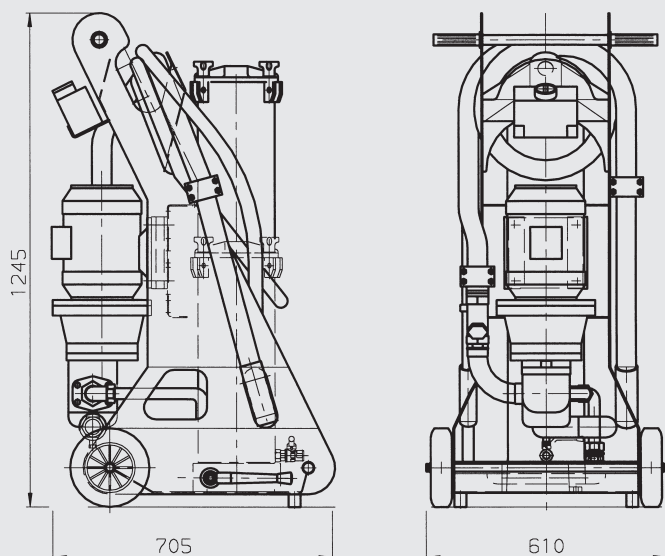
Filter design _____
2 = filter size 1300
3 = filter size 2600
see next page

Clogging indicator _____
B = visual differential pressure indicator (Standard)
C = special model - differential pressure indicator electrical (VM2C.0) with automatic motor cut-out when filter is contaminated

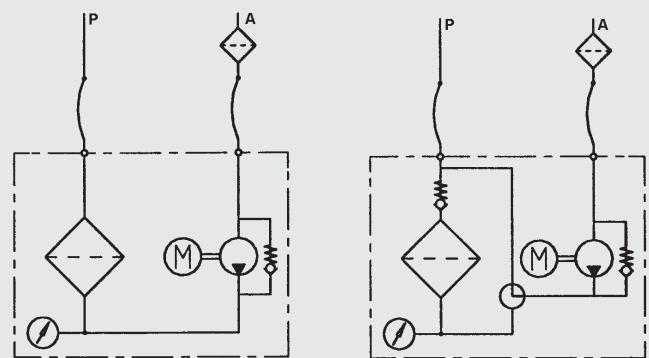
Supplementary details _____
no details = standard
S5 = suction hose 5 m with lance
D5 = pressure hose 5 m with lance
V = FPM (Viton) seal
SK = suction hose with threaded connection
DK = pressure hose with threaded connection

* = for type FCM 60 (1.5 kW) only

Dimensions



Hydraulic circuit diagram

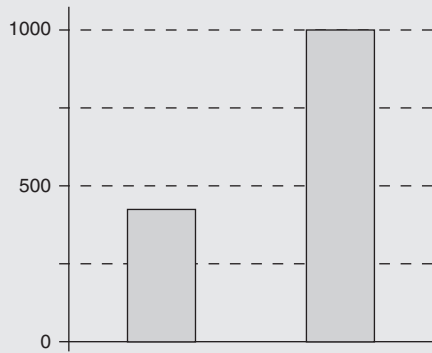


Standard model

Model with change-over

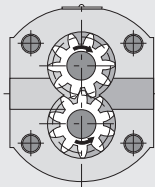
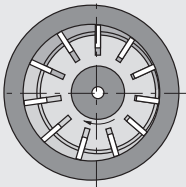
Versions

Viscosity [mm²/s]



Vane pump
(standard)

Gear pump



Replacement elements

Filter size	Filtration rating	Element type	Part No.
2	3 µm	1300 R 003 BN4HC-/KB (-V-KB)	1263059 (1263760)
2	5 µm	1300 R 005 BN4HC-/KB (-V-KB)	1263060 (1263761)
2	10 µm	1300 R 010 BN4HC-/KB (-V-KB)	1263061 (1263762)
2	20 µm	1300 R 020 BN4HC-/KB (-V-KB)	1263062 (1263763)
2	40 µm	1300 R 040 AM-/KB	1267699
2	10 µm	1300 R 010 BN4AM-/KB (-V-KB)	1270010 (1276060)
2	3 µm	1300 R 003 BN/AM-/KB (-V-KB)	1267991 (1271839)
3	3 µm	2600 R 003 BN4HC-/KB (-V-KB)	1263071 (1263784)
3	5 µm	2600 R 005 BN4HC-/KB (-V-KB)	1263072 (1263785)
3	10 µm	2600 R 010 BN4HC-/KB (-V-KB)	1263073 (1263786)
3	20 µm	2600 R 020 BN4HC-/KB (-V-KB)	1263074 (1263787)
3	40 µm	2600 R 040 AM-/KB	306899
3	3 µm	2600 R 003 BN/AM-/KB (-V-KB)	1268232 (1275329)
3	10 µm	2600 R 010 BN/AM-/KB	1276840

Selection table for motor-pump unit

Version	FCM 60	FCM 100
Vane pump	1.5 kW	2.2 kW
Gear pump	2.2 kW	3.0 kW

Note

The information in this brochure relates to the operating conditions and applications described.

For applications and operating conditions not described, please contact the relevant technical department.

Subject to technical modifications.

HYDAC FILTER SYSTEMS GMBH

Industriegebiet
D-66280 Sulzbach / Saar
Tel.: +49 (0) 6897/509-01
Fax: +49 (0) 6897/509-846
Internet: www.hydac.com
E-Mail: filtersystems@hydac.com