

The direct operated pressure relief valve series EVSA is a seated type valve for screw-in mounting. It is available in two sizes and three pressure stages.

Function

When the pressure in port P exceeds the setting pressure the cone opens to port T and thus limits the pressure in port P to the adjusted level.

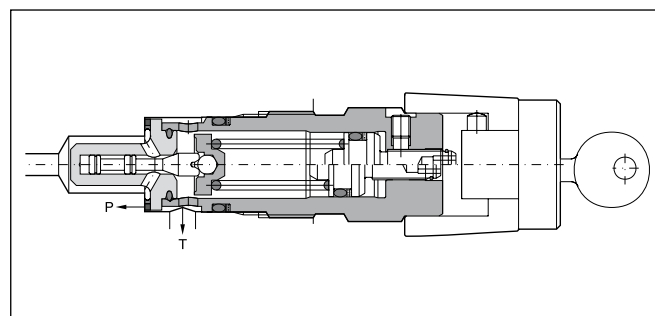
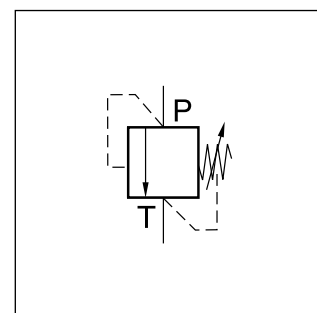
The integrated damping spool prevents pressure fluctuations in the transition region. The pressure is set by the adjusting screw, which is locked by the clamping screw. The setting can optionally be secured by a cylinder lock (key lock).

Features

- Seated type valve
- Screw-in mounting
- 3 pressure stages
- 2 adjustment modes
 - screw with lock nut
 - key lock

Technical data

General		Direct operated relief valve, seated type	
Design			
Nominal size		NG06	NG10
Interface		Screw-in mounting	
Mounting position		unrestricted	
Ambient temperature	[°C]	-20...+80	
Weight	[kg]	0.3	0.45
Hydraulics			
Max. operating pressure	[bar]	Port P 315, Port T depressurized	
Pressure stages	[bar]	64, 160, 315	
Nominal flow	[l/min]	40 (NG06), 80 (NG10)	
Fluid		Hydraulic oil according to DIN 51524...525	
Fluid temperature	[°C]	Recommended +30...+50, permitted -20...+70	
Viscosity permitted	[cSt] / [mm²/s]	20...380	
Viscosity recommended	[cSt] / [mm²/s]	30...50	
Filtration		ISO 4406 (1999); 18/16/13	

**Note**

The spring must be unloaded when the EVSA is screwed out of the manifold.

Ordering code

EVSA

Pressure relief valve

Pressure stages

A

Adjustment screw with hex. socket

Nominal size / thread type

1

FPM Seals

Design series
(not required for ordering)

Lock

Code	Pressure stages
064	up to 64 bar
160	up to 160 bar
315	up to 315 bar

Code	Lock
omit	Normal
Z	Key lock

Code	Nominal size
06	NG06, M28x1.5
10	NG10, M35x1.5

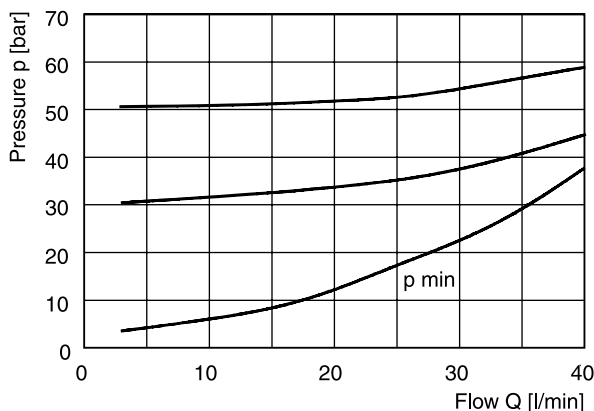
Bold letters =

Short-term availability

$\Delta p/Q$ performance curves
 measured at $t = 50^\circ\text{C}$ and $\nu = 36 \text{ mm}^2/\text{s}$

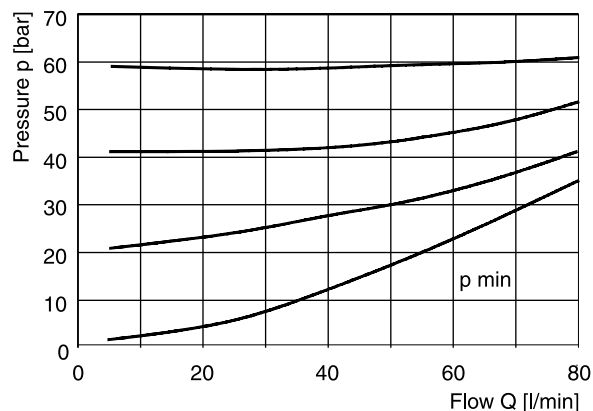
NG06

Pressure stage 64 bar

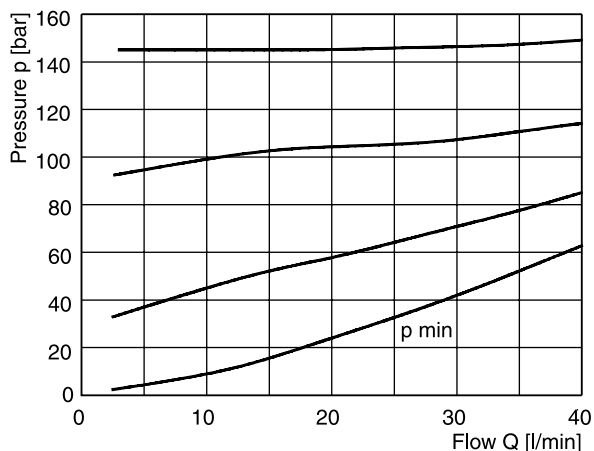


NG10

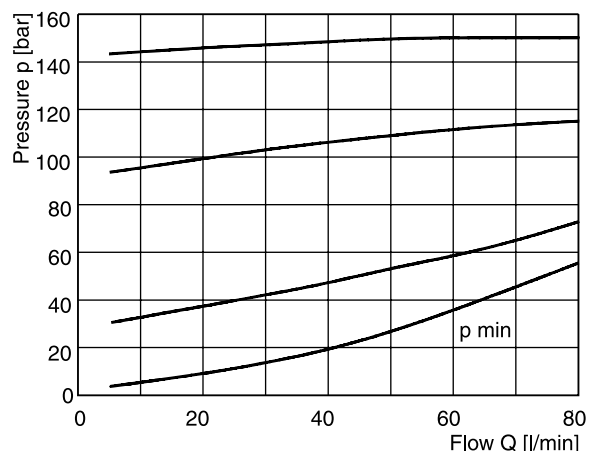
Pressure stage 64 bar



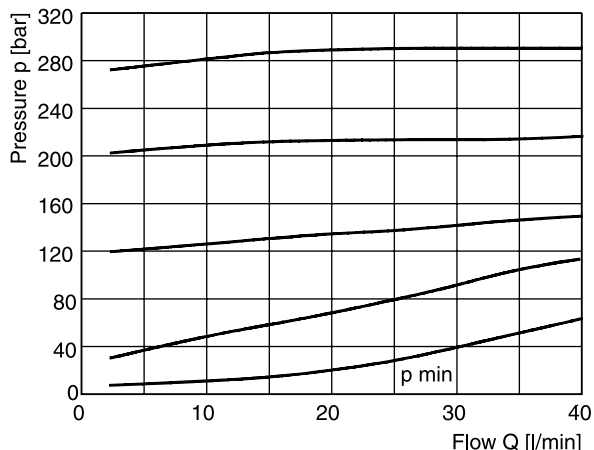
Pressure stage 160 bar



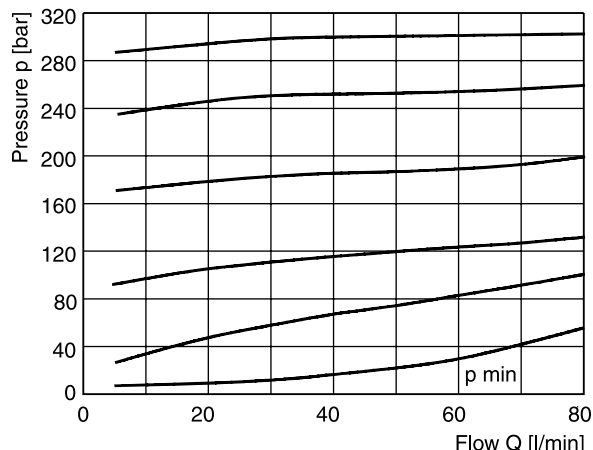
Pressure stage 160 bar



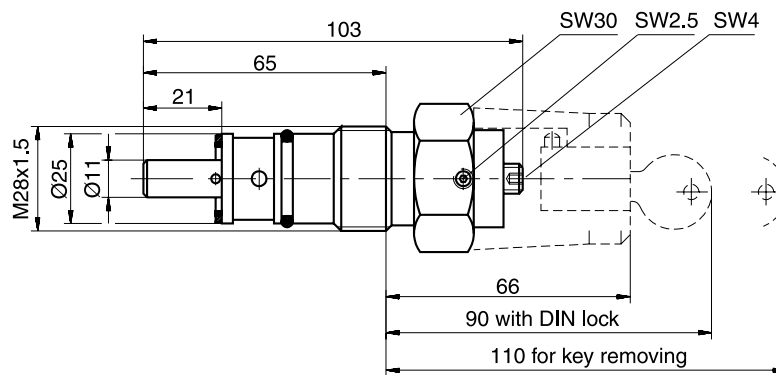
Pressure stage 315 bar



Pressure stage 315 bar

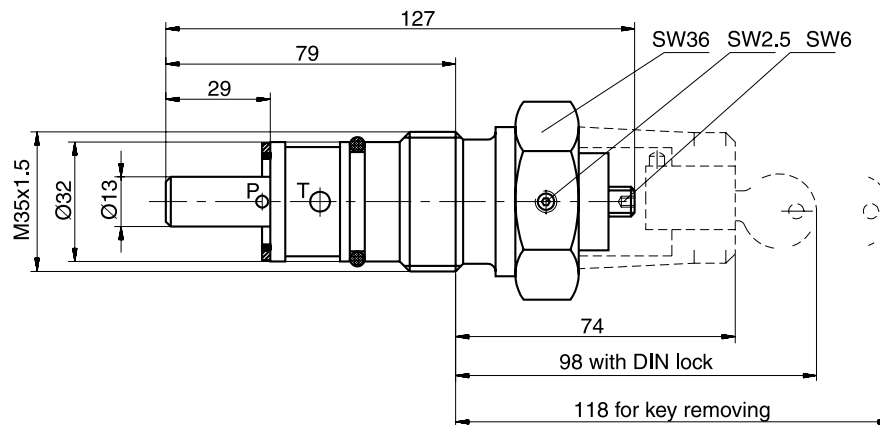


EVSA NG06



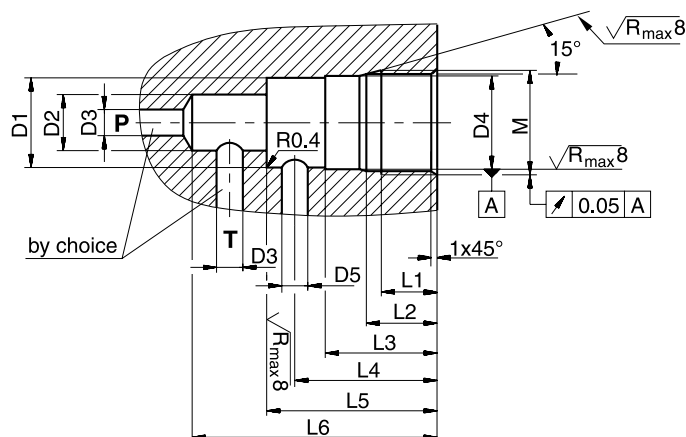
 Kit
SK-EVSAA0613

EVSA NG10



 Kit
SK-EVSAA1013

Installation dimensions



Size	M	D ₁	D ₂	D ₃	D ₄	D ₅	L ₁	L ₂	L ₃	L ₄	L ₅	L ₆
NG06	M28 x 1.5	Ø24.8	Ø15	Ø6.8	Ø25 ^{H9}	Ø6.8	15	19	30	35	45	65
NG10	M35 x 1.5	Ø31.8	Ø18.5	Ø10	Ø32 ^{H9}	Ø10	18	23	35	41 - 46	52	80

This image shows a full page of blank graph paper. The grid consists of small, uniform squares formed by thin, light gray lines. There are no margins, text, or other markings on the page.